

July GCT



Photo courtesy of GCT Advisory Council member Karen Riggert.

Dear Susan,

Invasive Species Town Committee

Groton selectmen have voted to form the [Invasives Control Committee](#) to deal with the problem of invasive species in town.

Invasive species are a serious problem that will take significant effort to deal with. Please [consider volunteering](#) if you have any interest in this. To do this electronically, print out the form, fill it in, scan it, and send the scan to the [Town Manager](#). A large number of people will be needed to be effective.

After enough volunteers have emerged, the selectmen will vote to appoint them to the committee, then the committee can start

DONATE NOW

Secure donations through
Network for Good

Join us in protecting Groton's open spaces. Renew your membership now!

Lotz Land Dedication: 8/9, 10 AM



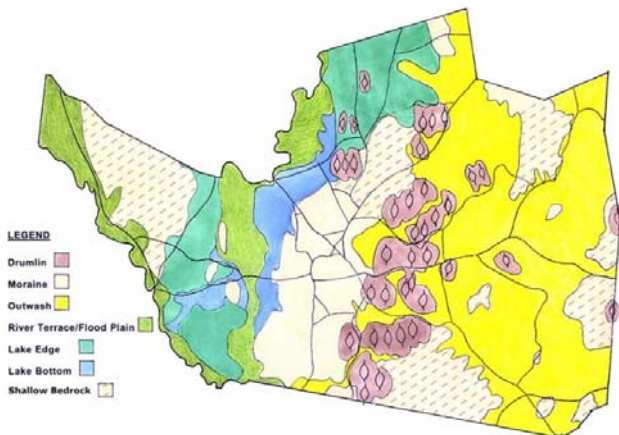
The Lotz Land will be formally dedicated on Sunday, August 9 at 10:00 AM.

meeting and conducting business.

Thanks for your consideration, and please pass this on to anyone that might be interested.

"Gift of the Glaciers"

As part of the Connecting Communities presentation on May 31, trustee Bob Pine gave a history lesson of sorts on the fascinating geography of Groton. In case you missed it, you can read [his presentation](#) as compiled by GCT Advisory Council member Mary Metzger.



Map: Bob Pine

Membership Renewal Time

Now that we are all getting back outdoors, it is a good time to remember your annual dues.

Your \$50 family membership says you are proud to protect and manage our rural landscape and that you value the diverse ecosystems we are lucky to have here. We hope by making the renewal drive happen during the summer, it will be a convenient way to remember and budget your support. We also hope to make renewing your membership an easier process as well. You can renew online using the Donate Now button to the right.

If you made a special donation to the GCT at year-end in 2014 you are paid until April 2016, thank you very much. If you are unsure of your membership status [drop us an email](#) and we will be happy to check for

Bob and Sue Lotz donated 13 acres from the trail known as Half Moon Road down to and including Half Moon Pond.

Approximately ½ of the parcel is upland with steep grades and bedrock outcrops with oak and pine forest. The other half of the parcel makes up a significant portion of Half Moon Swamp including the largest portion of open water. The swamp has been documented to exist since the 17th century.

Directions and parking: Park on the right side of Indian Hill Road, at the end. Beware of poison ivy along the road. Go right at the very end of Indian Hill Road on Half Moon Road (unpaved woods road). The dedication and sign are a little less than 1/4 mile down the trail.

What to do in July?

Check out our [website](#) for great activities featured in the Swarm of Drumlins.



Harlan is Found!



Congratulations to Kara and Kaitlin Kramer who found Harlan on the Bates Land. We hope they enjoy their free ice

you. And please consider [renewing online](#) today!

Quick Links

[How you can help](#)

[Our Properties](#)

[Contact Information](#)

[Trustees and Founders](#)

[Groton Trails Website](#)

cream. Now it is your turn! Harlan the gnome has leaped to a new GCT property. He is 30 feet off the trail on a hill near a trail that has little rocks piled on a large rock. Good luck! Watch for clues on our [Facebook](#) page!



Join us in protecting Groton's open spaces. Renew your membership now!

Your membership says you care about Groton's open spaces

Thank you to everyone who has taken a few moments to renew your annual membership. The support means a great deal, and goes a long way in helping us with our annual goals. This year our goals include continuing our invasive species project, create new access to the Blackman/Genther Woods lands and finishing The General Field park project. Your membership dues -- and your donation of time -- help our all-volunteer board get this work and much more done. If you haven't renewed your membership, please take time do so now, simply by clicking the DONATE NOW button. And remember, each recurring membership receives a thank you of note cards featuring GCT properties.

Thank you! Susan, Ted, Ed and David on membership



The Groton Conservation Trust is a private, non-profit land trust in Groton, Massachusetts. It was founded in 1964 to acquire, preserve, and provide public access to lands with significant conservation value. The Trust is governed by a Board of Trustees made up of Groton residents with varied backgrounds, occupations and interests.

You are receiving this email as an interested member of the GCT.

[Forward email](#)



This email was sent to constantcontact@gctrust.org by susanh@gctrust.org | [Update Profile/Email Address](#) | Rapid removal with [SafeUnsubscribe™](#) | [Privacy Policy](#).



Groton Conservation Trust | PO Box 395 | Groton | MA | 01450